



E-Lins Technology Co.,Ltd.

Connect the M2M IoT In-Vehicle

M²M

Machine to Machine



Internet of Things

In-Vehicle



E-Lins Technology Co.,Ltd

E-Lins Technology Co.,Limited www.e-lins.com

Tel: +86-755-29230581

E-Lins Technology Co.,Ltd



Factory Inside & Factory Office Corner

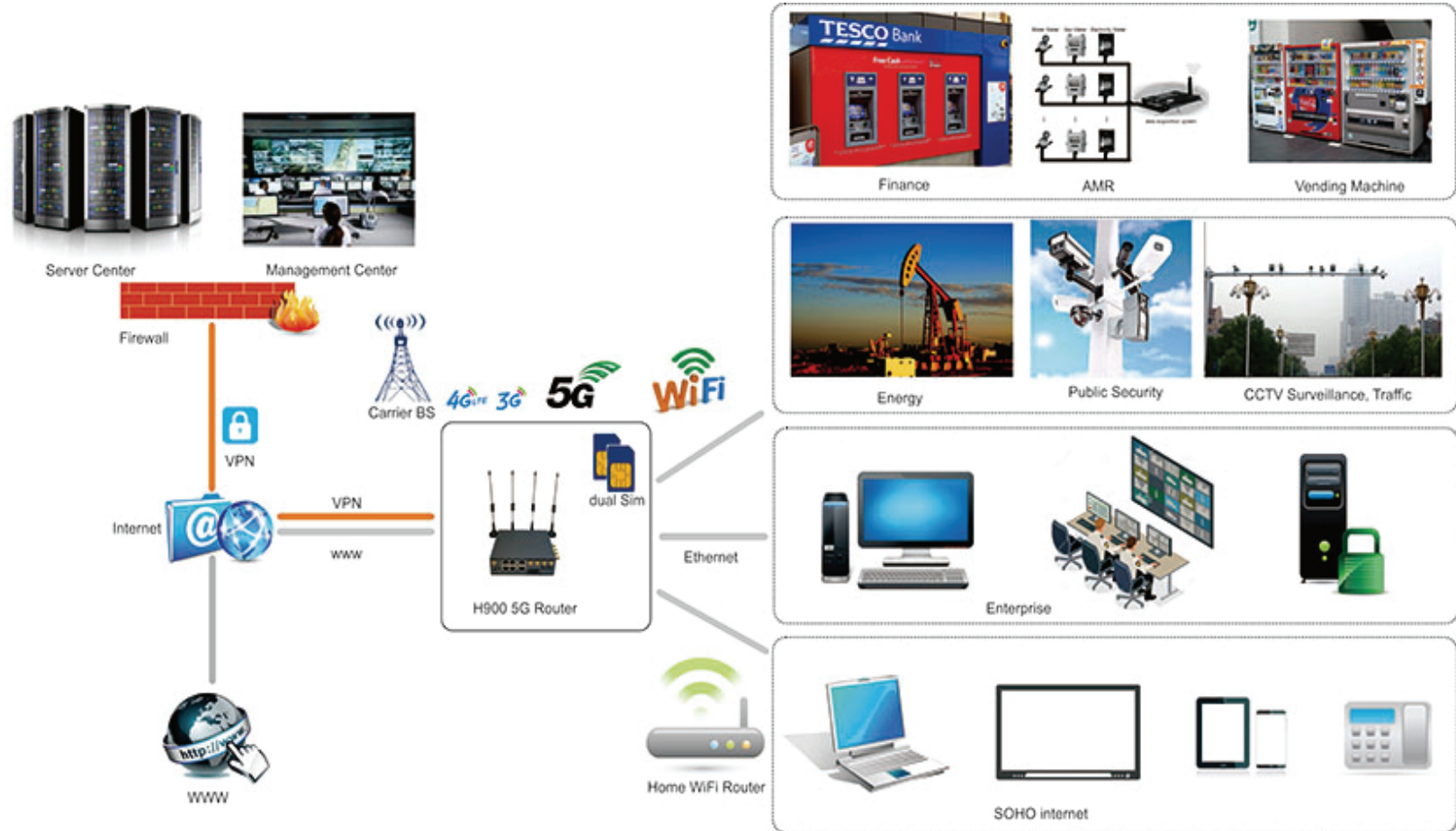


Application Field

Application Field for Wireless M2M and IoT

- Water, gas and oil flow metering
- Data Monitor and Control
- CCTV, DVR monitor application
- AMR (automatic meter reading)
- Power station monitoring and control
- Remote POS (point of sale) terminals
- ATM machines
- Traffic signals monitor and control
- Fleet management
- Power distribution network supervision
- Central heating system supervision
- Weather station data transmission
- Hydrologic data acquisition
- Vending machine
- Traffic info guidance
- Parking meter and Taxi Monitor
- Telecom equipment supervision (Mobile base station, microwave or optical relay station)
- Other applications

Typical Application Diagram



Typical Application Diagram

Failover & Bandwidth Bonding (Load Balance) Tech. for M2M / IoT





Routers and Modems

E-Lins Industrial Wireless Router & Modem for M2M / IoT / In-Vehicle

Model	Type	SIM Slot	5G	4G LTE	3G	2G	Ethernet RJ45	USB	TF	WiFi	High Gain WiFi	Serial	GPS	DI DO	POE	DC5-60V	Others
H685	Router	1	Y	Y	Y	Y	2			802.11b/g/n		Y	O	Y	Y	O	Cute Size Gigabit Ethernet
H820	Router	1	N/A	Y	Y	Y	5			802.11b/g/n		Y	O			O	
H820Q	Router	1	N/A	Y	Y	Y	5			802.11b/g/n 802.11AC	O	Y	O			O	
H820QO	Router	2	N/A	Y	Y	Y	2			802.11b/g/n 802.11AC	O	Y	O		Y	O	IP67/IP68 Outdoor
H750	Router	2	N/A	Y	Y	Y	3		Y	802.11b/g/n		Y	O	Y	Y	O	
H700	Router	2	N/A	Y	Y	Y	5	Y	Y	802.11b/g/n 802.11AC		Y	O	Y		O	Gigabit Ethernet
H900	Router	2	Y	Y	Y	Y	5	Y		802.11b/g/n 802.11AC	O	Y	O	Y	Y	O	Gigabit Ethernet
H720	Router	2	N/A	Y	Y	Y	5			802.11b/g/n		Y	O	Y	Y	O	
M400	Modem	1	N/A	Y	Y	Y		Y				Y	O				
M300	Modem	1	O	Y	Y	Y		Y					O			O	

Y = supported

O = option

Default power input is DC-5-40V wide range

TF = MicroSD card

Serial: RS232 or RS485

LTE: CAT0/1/3/4/6/9/12/16/18/20

H685 Mini Size Smart 3G/4G/5G Router



Main

Industrial class, single sim single radio module, one sim card slot;
VPN(PPTP, L2TP, IPsec, GRE, OpenVPN, DMVPN, etc.), SNMP; DDNS, DHCP,
NAT/NAPT, Web, Auto-dial, always online, watch-dog, POE;
Cellular/WAN RJ45/WiFi Client supports failover;

Ports: RJ45 LAN * 1 + RJ45 WAN * 1 (WAN can be used as LAN to get two RJ45 LAN)
Option: DI/DO digital Input and Output port, WiFi, Serial RS232/RS485, GPS/GNSS,
DC input 5V~60V (default is DC5V-40V)

Datasheet

Download Link : <http://www.e-lins.com/EN/download/H685-Datasheet-Eng.pdf>

Download Link : <http://www.e-lins.com/EN/download/H685-5G-Router-Datasheet-Eng.pdf>

H820 Series Smart 3G/4G Router



Main

Industrial class, single sim single radio module, one sim card slot;
VPN(PPTP, L2TP, IPsec, GRE, OpenVPN, DMVPN, etc.), SNMP;
DDNS, DHCP, NAT/NAPT, Web, Auto-dial, always online, watch-dog;
Cellular/WAN RJ45/WiFi Client supports cold failover;

Ports: RJ45 LAN * 4 + RJ45 WAN * 1

Option: WiFi, Serial RS232/RS485, GPS/GNSS, DC input 5V~60V (default is DC5V-40V)

Datasheet

Download Link : <http://www.e-lins.com/EN/download/H820-Datasheet-Eng.pdf>

H820Q Smart Dual WiFi 3G/4G Router



Main

Industrial class, single sim single radio module, one sim card slot;
VPN(PPTP, L2TP, IPsec, GRE, OpenVPN, DMVPN, etc.), SNMP;
DDNS, DHCP, NAT/NAPT, Web, Auto-dial, always online, watch-dog;
Cellular/WAN RJ45/WiFi Client supports cold failover;

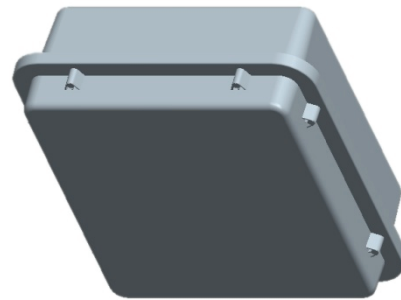
Ports: RJ45 LAN * 4 + RJ45 WAN * 1

Option: Dual Band 802.11AC WiFi, Serial RS232/RS485, GPS/GNSS,
DC input 5V~60V (default is DC5V-40V)

Datasheet

Download Link : <http://www.e-lins.com/EN/download/H820Q-Datasheet-Eng.pdf>

H820QO Outdoor Dual SIM Dual WiFi 3G/4G Router



Main

Industrial class, single sim single radio module, two sim card slots;
IP67/IP68 level water-proof and dust-proof;
VPN(PPTP, L2TP, IPsec, GRE, OpenVPN, DMVPN, etc.), SNMP;
DDNS, DHCP, NAT/NAPT, Web, Auto-dial, always online, watch-dog;
Cellular/WAN RJ45/WiFi Client supports cold failover;

Ports: RJ45 LAN * 1 + RJ45 WAN * 1 (WAN can be used as LAN to get two RJ45 LAN)

Option: Dual Band 802.11AC WiFi, GPS/GNSS, DC input 5V~60V (default is DC5V-40V)

Datasheet

Download Link : <http://www.e-lins.com/EN/download/H820QO-Datasheet-Eng.pdf>

H700 Gigabit Ethernet Dual SIM Dual WiFi Router



Main

Industrial class, dual sim dual radio module, two sim card slots.
Two sim for failover redundancy (backup use), load balance;
VPN(PPTP, L2TP, IPSec, GRE, OpenVPN, DMVPN, etc.), SNMP;
DDNS, DHCP, NAT/NAPT, Web, Auto-dial, always online, watch-dog;
Cellular/WAN RJ45/WiFi Client supports cold failover;

Ports: RJ45 LAN * 4 + RJ45 WAN * 1 Gigabit Ethernet, USB, TF (MicroSD)

Option: DI/DO digital Input and Output port, 802.11AC Dual Band WiFi, Serial RS232/RS485,
GPS/GNSS, DC input 5V~60V (default is DC5V-40V)

Datasheet

Download Link : <http://www.e-lins.com/EN/download/H700-Datasheet-Eng.pdf>

H900 Gigabit Ethernet Dual SIM Router



Main

Industrial class, dual sim, two sim card slots.

Two sim for failover redundancy (backup use);

VPN(PPTP, L2TP, IPSec, GRE, OpenVPN, DMVPN, etc.), SNMP;

DDNS, DHCP, NAT/NAPT, Web, Auto-dial, always online, watch-dog;

Cellular/WAN RJ45/WiFi Client supports cold failover;

Ports: RJ45 LAN * 4 + RJ45 WAN * 1, Gigabit Ethernet, USB

Option: DI/DO digital Input and Output port, 802.11AC Dual Band or Tri Band WiFi, Serial RS232/RS485, GPS/GNSS, DC input 5V~60V (default is DC5V-40V)

Datasheet

Download Link : <http://www.e-lins.com/EN/download/H900-Datasheet-Eng.pdf>

<http://www.e-lins.com/EN/download/H900-5G-Router-Datasheet-Eng.pdf>

H720 Series Dual SIM Cellular Router



Main

Industrial class, dual sim dual radio module, two sim card slots.
Two sim for failover redundancy (backup use), load balance;
VPN(PPTP, L2TP, IPsec, GRE, OpenVPN, DMVPN, etc.), SNMP;
DDNS, DHCP, NAT/NAPT, Web, Auto-dial, always online, watch-dog; POE,
Cellular/WAN RJ45/WiFi Client supports cold failover;

Ports: RJ45 LAN * 4 + RJ45 WAN * 1

Option: DI/DO digital Input and Output port, WiFi, Serial RS232/RS485, GPS/GNSS,
DC input 5V~60V (default is DC5V-40V)

Datasheet

Download Link: <http://www.e-lins.com/EN/download/H720-Datasheet-Eng.pdf>

H750 Series Dual SIM Cellular Router



Main

Industrial class, dual sim dual radio module, two sim card slots.
Two sim for failover redundancy (backup use), load balance;
VPN(PPTP, L2TP, IPsec, GRE, OpenVPN, DMVPN, etc.), SNMP;
DDNS, DHCP, NAT/NAPT, Web, Auto-dial, always online, watch-dog; POE,
Cellular/WAN RJ45/WiFi Client supports cold failover;

Ports: RJ45 LAN * 2 + RJ45 WAN * 1

Option: DI/DO digital Input and Output port, WiFi, RS232/RS485, GPS/GNSS,
DC input 5V~60V (default is DC5V-40V)

Datasheet

Download Link : <http://www.e-lins.com/EN/download/H750-Datasheet-Eng.pdf>

Typical Application Diagram



M300 Series Cellular Modem



Type

Industrial class, single sim single radio module, one sim card slot. USB port.

Datasheet

Link1: <http://www.e-lins.com/EN/download/M300-Datasheet-Eng.pdf>

M400 Series Cellular Modem



Type

Industrial class, single sim single radio module, one sim card slot. Serial port, or serial + USB port

Datasheet

Link1: <http://www.e-lins.com/EN/download/M400-Datasheet-Eng.pdf>



Difference between DTU Modem & Normal Modem

Item	DTU Modem (Serial to Cellular Gateway)	Normal Modem
Dial up	Support automatically dialup; Online always; trigger to dialup, schedule to dialup	Need back platform to dialup
TCP/IP, PPP	Yes	Yes
Interface	RS232/RS485	RS-232
Bandwidth	20~40Kbit/s	20~40Kbit/s
Coverage	Same as GSM network	Same as GSM network
Transparent Data	Yes	No
VDPN	Yes	Yes
Point to Point	Yes	Depends network
Point to Multipoint	Yes	No
Center to Multipoint	Yes	No
Dynamite IP Address Mapping	Yes	No
Multi-protocol	Yes	No
Applications	Utilities, traffic control, finance and industry supervision	Mobile Internet access for PC

DTU (Serial to Cellular Gateway)

Series and Models	Supported Ports	Supported Networks	Configure Method
H685 with DTU	RJ45 + RS232 / RS485 / TTL	2G / 3G / 4G LTE / 5G	GUI Web / Telnet / SSH Remote Management System
H820 with DTU	RJ45 + RS232 / RS485 / TTL	2G / 3G / 4G LTE	GUI Web / Telnet / SSH Remote Management System
H820Q with DTU	RJ45 + RS232 / RS485 / TTL	2G / 3G / 4G LTE	GUI Web / Telnet / SSH Remote Management System
H700 with DTU	RJ45 + RS232 / RS485 / TTL	2G / 3G / 4G LTE	GUI Web / Telnet / SSH Remote Management System
H750 with DTU	RJ45 + RS232 / RS485 / TTL	2G / 3G / 4G LTE	GUI Web / Telnet / SSH Remote Management System
H720 with DTU	RJ45 + RS232 / RS485 / TTL	2G / 3G / 4G LTE	GUI Web / Telnet / SSH Remote Management System
H900 with DTU	RJ45 + RS232 / RS485 / TTL	2G / 3G / 4G LTE / 5G	GUI Web / Telnet / SSH Remote Management System

