

Notes: Please tell us details if the catalog does not list the band / frequencies. Band and frequencies can be customized. The listed one is just for reference.

GPS & GSM Combined Antennas



Model: EL-0822GPS28A
Name: GPS+GSM Combined



EL-0822GPS28B
GPS+GSM Combined Antenna



EL-0822GPS28C
GPS+GSM Combined Antenna

Model	EL-0822GPS28A		EL-0822GPS28B		EL-0822GPS28C	
Electrical specifications						
Frequency range-MHz	1575.42±5	824-960 1710-2170	1575.42±5	824-960 1710-2170	1575.42±5	824-960 1710-2170
Notes: The frequency is not the full one. Can customize, for example GSM/CDMA/3G/4G, etc.						
VSWR	≤2.0	≤2.0	≤2.0	≤2.0	≤2.0	≤2.0
Gain-dBi	2	2	2	2	2	2
LNA Gain-dBi	28	/	28	/	28	/
Noise Figure-dBi	<1.5	/	<1.5	/	<1.5	/
Polarization	RHCP	Vertical	RHCP	Vertical	RHCP	Vertical
Impedance-Ω	50	50	50	50	50	50
DC Voltage-V	3-5	/	3-5	/	3-5	/
Mechanical specifications						

Cable Length-m	3or customized	3or customized	3or customized
Connector	SMA-JW or customized	Fakra or customized	Fakra or customized
Dimension-mm	Φ80×14	60×51×15.5	Φ46×15
Net Weight-g	142	150	160
Installation	Magnet	Magnet	Magnet
Waterproof	IP67	IP67	IP67
Description: Apply to car navigation, logistics positioning, etc.			
Customization: connector, cable length, gain dBm, frequency range can be customized under requirement.			

GPS Antennas



Model: EL-GPS28A-1.5
Name: GPS Antenna



EL-GPS28B-3
GPS Antenna



EL-GPS28C-3
GPS Antenna



EL-GPS40D-0.5
GPS Navigation Antenna

Model	EL-GPS28A-1.5	EL-GPS28B-3	EL-GPS28C-3	EL-GPS40D-0.5
Electrical specifications				
Frequency range-MHz	1575.42±5	1575.42±5	1575.42±5	1575.42±5
VSWR	≤2.0	≤2.0	≤2.0	≤2.0
LNA Gain -dBi	28	28	28	40

E-Lins Technology Co., Limited

Add: #901-902, Unit B, Jiayun Bld., Huada Rd., Dalang, Longhua, Shenzhen, 518000, China

Tel: +86-755-29230581 83700465 E-mail: sales@szelins.com www.szelins.com www.e-lins.com

Noise Figure-dB	<1.5	<1.5	<1.5	<1.5
Polarization	RHCP	RHCP	RHCP	RHCP
Impedance-Ω	50	50	50	50
DC Voltage-V	3-5	3-5	3-5	3-5
Mechanical specifications				
Cable Length-m	1.5or customized	3or customized	3or customized	0.5or customized
Connector	SMA-J or customized	SMA-J or customized	Fakra or customized	BNC or customized
Dimension-mm	46×38×13	50×37×17	Φ46×15	Φ95×130
Net Weight-g	75	77	77	200
Installation	Magnet or Adhesive	Magnet or Adhesive	Screw	Pole
Operation Temperature--°C	-40~+60	-40~+60	-40~+60	-40~+60
Waterproof	IP67	IP67	IP67	IP67
Description: Apply to car navigation, logistics positioning, sea navigation, etc.				
Customization: connector, cable length, gain dBm, frequency range can be customized under requirement.				

GPS Internal Antennas



Model: EL-IGPS28A-60
Name: GPS Internal Antenna



EL-IGPS18B-60
GPS Internal Antenna



EL-IGPS18C-60
GPS Internal Antenna



EL-IGPS18D-60
GPS Internal Antenna

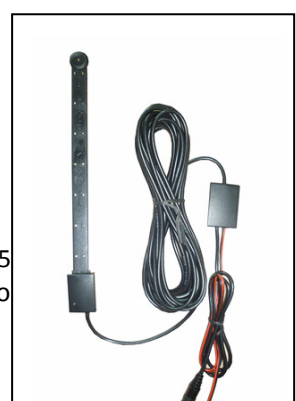
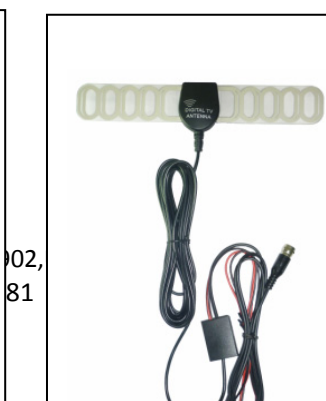
Model	EL-IGPS28A-60	EL-IGPS18B-60	EL-IGPS18C-60	EL-IGPS18D-60
Electrical specifications				
Frequency range -MHz	1575.42	1575.42	1575.42	1575.42
VSWR	≤2.0	≤2.0	≤2.0	≤2.0
Band Width-MHz	±2	±2	±2	±2
LNA Gain-dBi	28	18	18	18
Noise Figure-dBi	<1.5	<1.5	<1.5	<1.5
Polarization	RHCP	RHCP	RHCP	RHCP
Impedance-Ω	50	50	50	50
DC Voltage-V	3-5	3-5	3-5	3-5
Mechanical specifications				
Cable- Length-mm	60 or customized	60 or customized	60 or customized	60 or customized
Connector	IPEX or customized	IPEX or customized	IPEX or customized	IPEX or customized
Dimension-mm	25×25×7.5	18×18×6.5	15×15×6.5	6×15×4.5
Net Weight -g	21	8	7	3.5
Operation Temperature-℃	-40~+60	-40~+60	-40~+60	-40~+60
Installation	embedded	embedded	embedded	embedded
Description: Embedded built-in type, applied to car navigation, logistics positioning etc.				
Customization: connector, cable length, gain dBm, frequency range can be customized under requirement.				

DVB-T Passive Antennas



Model: EL-0208DTF	EL-0208DTE	EL-0208DTD	EL-0208DTB	
Name: DVB-T Antenna	ATSC Antenna	DVB-T Antenna	DVB-T Antenna	
Model	EL-0208DTF	EL-0208DTE	EL-0208DTD EL-0208DTB	
Electrical specifications				
Frequency Range-MHz	174-230/470-860	174-230/470-860	174-230/470-860	174-230/470-860
VSWR	≤2.0	≤2.0	≤2.0	≤2.0
Gain-dBi	3.0	3.0	2.0	5.0
Polarization	Vertical	Vertical	Vertical	Vertical
Impedance-Ω	75	75	75	75
Max.Power-W	50	50	50	50
Mechanical specifications				
Connector	IEC-J or customized	MCX-J or customized	SMA-J or customized	SMA-J or customized
Cable Length-m	3 or customized	1.5 or customized	1.5 or customized	1.5 or customized
Dimension-mm	Φ60×400	Φ43×365(shrink120)	Φ29×112	Φ63×129
Net Weight-g	170	41	50	190
Installation	Screw	Magnet	Magnet	Magnet
Operation Temperature-℃	-40~+60	-40~+60	-40~+60	-40~+60
Humidity-%	5~95	5~95	5~95	5~95
Description: Apply to mobile TV terminals.				
Customization: connector, cable length, gain dBm, frequency range can be customized under requirement.				

DVB-T Active Antennas



02,
81

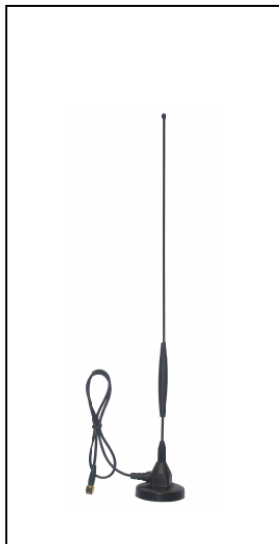
olog
Rd.,
s@s

n, 5
s.co

Model: EL-0208ATB18 EL-0208ATC18 EL-0208ATA18 EL-0208ATA18A
 Name: DVB-T Active Antenna DVB-T Active Antenna DVB-T Active Antenna DVB-T Active Antenna

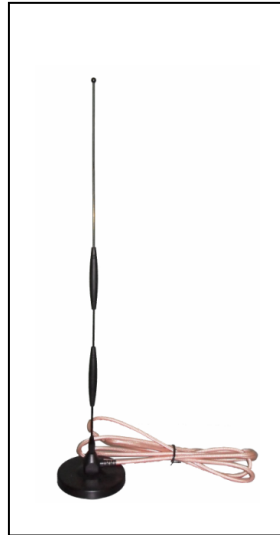
Model	EL-0208ATB18	EL-0208ATC18	EL-0208ATA18	EL-0208ATA18A
Electrical specifications				
Frequency Range-MHz	174-230/470-860	174-230/470-860	174-230/470-860	174-230/470-860
VSWR	≤2.0	≤2.0	≤2.0	≤2.0
LNA Gain-dBi	18	18	18	18
Polarization	Vertical	Vertical	Vertical	Vertical
Impedance-Ω	75	75	75	75
DC Voltage -V	3-5	3-5	3-5	3-5
Max. Power-W	50	50	50	50
Mechanical specifications				
Connector	IEC-J or customized	F-J or customized	F-J or customized	DC 3.5
Cable Length-m	5 or customized	3 or customized	3 or customized	5 or customized
Dimension-mm	Φ50×132	35×219	21×9×200	21×9×200
Net Weight-g	184	72	54	91
Radome material	Plastic	Plastic	Plastic	Plastic
Installation	Magnet	3M Adhesive	3M Adhesive	3M Adhesive
Operation Temperature-°C	-40~+60	-40~+60	-40~+60	-40~+60
Humidity-%	5~95	5~95	5~95	5~95
Description: Apply to mobile TV terminals.				
Customization: connector, cable length, gain dBm, frequency range can be customized under requirement.				

Car Antennas (Big Magnetic Mount Antenna)



Model: EL-0918MSA-3

Name: GSM Vehicle Antenna



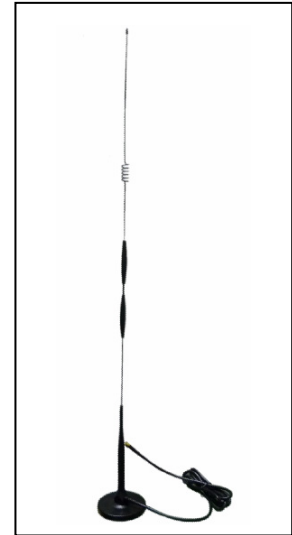
EL-0918MSB5A-3

GSM Vehicle Antenna



EL-0918MSB5-3

GSM Vehicle Antenna



EL-0918MSB7-3

GSM Vehicle Antenna

Model	EL-0918MSA-3	EL-0918MSB5A-3	EL-0918MSB5-3	EL-0918MSB7-3
Electrical specifications				
Frequency Range-MHz	890-960 1710-1990	890-960 1710-1990	890-960 1710-1990	890-960 1710-1990
Notes: The frequency is not the full one. Can customize, for example GSM/CDMA/3G/4G, etc.				
VSWR	≤2.0	≤2.0	≤2.0	≤2.0
Gain-dBi	3.0-5.0	5.0-7.0	5.0-7.0	7.0-9.0
Polarization	Vertical	Vertical	Vertical	Vertical
Impedance-Ω	50	50	50	50
Max. Power-W	50	50	50	50
Mechanical specifications				
Connector	SMA-J	SMA-J	SMA-J	SMA-J

E-Lins Technology Co., Limited

Add: #901-902, Unit B, Jiayun Bld., Huada Rd., Dalang, Longhua, Shenzhen, 518000, China

Tel: +86-755-29230581 83700465 E-mail: sales@szelins.com www.szelins.com www.e-lins.com

	or customized	or customized	or customized	or customized
Cable Length-m	3 or customized	3 or customized	3 or customized	3 or customized
Dimension-mm	Φ48×385	Φ84×475	Φ84×720	Φ84×810
Net Weight-Kg	120	395	397	400
Operation Temperature-°C	-40~+60	-40~+60	-40~+60	-40~+60
Installation	Magnet	Magnet	Magnet	Magnet
Description: Apply to CDMA800/GSM network terminals and car mobile terminals.				
Customization: connector, cable length, gain dBm, frequency range can be customized under requirement.				

Car Antennas (Small Magnetic Mount Antenna)



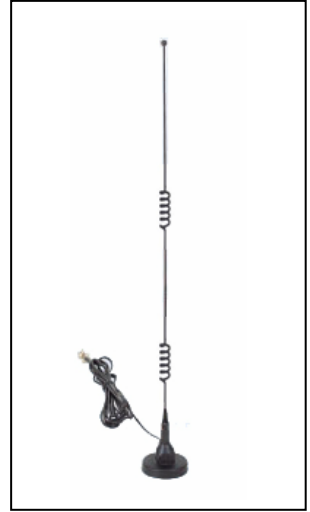
Model: EL-0918SA-3
Name: GSM Vehicle



EL-0918SB-3
GSM Vehicle Antenna



EL-0918SC-3
GSM Vehicle Antenna



EL-0918SD5-3
GSM Vehicle Antenna

Model	EL-0918SA-3	EL-0918SB-3	EL-0918SC-3	EL-0918SD5-3
Electrical specifications				
Frequency Range-MHz	824-960 1710-1990	824-960 1710-1990	824-960 1710-1990	824-960 1710-1990

Notes: The frequency is not the full one. Can customize, for example GSM/CDMA/3G/4G, etc.				
VSWR	≤2.0	≤2.0	≤2.0	≤2.0
Gain-dBi	2.0	2.0	2.0	5.0
Polarization	Vetical	Vetical	Vetical	Vetical
Impedance-Ω	50	50	50	50
Max. Power -W	50	50	50	50
Mechanical specifications				
Connector	SMA-J or customized	SMA-J or customized	SMA-J or customized	SMA-J or customized
Cable Length-m	3 or customized	3 or customized	3 or customized	3 or customized
Dimension-mm	Φ29×200	Φ42×290	Φ45×290	Φ48×470
Net Weight-Kg	38	45	45	130
Operation Temperature-°C	-40~+60	-40~+60	-40~+60	-40~+60
Installation	Magnet	Magnet	Magnet	Magnet
Description: Apply to CDMA800/GSM network terminals and car mobile terminals.				
Customization: connector, cable length, gain dBm, frequency range can be customized under requirement.				

Angel Rubber Terminal Antennas



Model: EL-0918TEA
Name: GSM Rubber Antenna



Model: EL-0918TEB
Name: GSM Rubber Antenna



Model: EL-0819TEC
Name: GSM Rubber Antenna



Model: EL-0918TED
Name: GSM Rubber Antenna

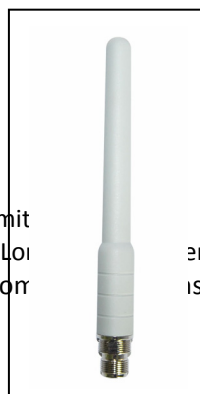
E-Lins Technology Co., Limited

Add: #901-902, Unit B, Jiayun Bld., Huada Rd., Dalang, Longhua, Shenzhen, 518000, China

Tel: +86-755-29230581 83700465 E-mail: sales@szelins.com www.szelins.com www.e-lins.com

Model	EL-0918TEA	EL-0918TEB	EL-0819TEC	EL-0918TED
Electrical specifications				
Frequency Range -MHz	890-960 1710-1880	890-960 1710-1880	824-960 1710-1990	890-960 1710-1880
Notes: The frequency is not the full one. Can customize, for example GSM/CDMA/3G/4G, etc.				
VSWR	≤2.0	≤2.0	≤2.0	≤2.0
Gain-dBi	2.0	2.0	2.0	2.0
Polarization	Vertical	Vertical	Vertical	Vertical
Impedance-Ω	50	50	50	50
Max. Power-W	50	50	50	50
Mechanical specifications				
Connector	SMA-JW	SMA-JW	SMA-JW	SMA-JW
Dimension-mm	Φ10.5×51	Φ8×59	Φ10.5×115	Φ10.5×108
Net Weight-g	9	7	18	12
Radome material	Plastic	Plastic	Plastic	Plastic
Operation Temperature-°C	-40~+60	-40~+60	-40~+60	-40~+60
Humidity-%	5~95	5~95	5~95	5~95
Description: Apply to GSM900/GSM1800 terminal equipment and GPRS wireless transmission.				
Customization: connector, cable length, gain dBm, frequency range can be customized under requirement.				

Terminal Antennas



T

1-90
058:

E-Li
in Bld.,
E-r

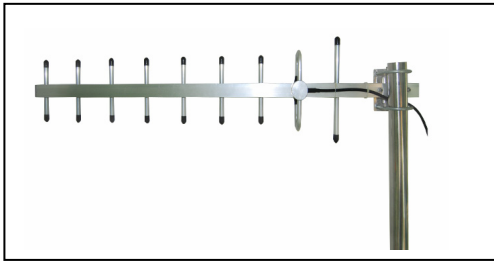
, Limit
ng, Lo
s.com

er, 518000, China
is.com www.e-lins.com

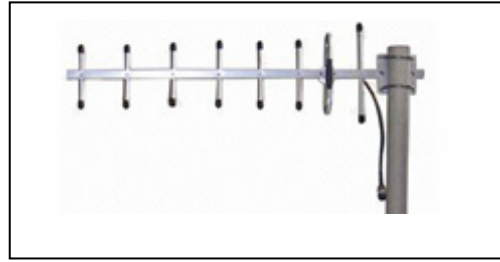
Model: EL-0819TMA EL-0819TMB EL-2100TMC EL-0922TMD EL-2100TME
 Name: GSM Antenna GSM Antenna 3G Antenna 3G Rubber Antenna 3G Fixed Antenna

Model	EL-0819TMA	EL-0819TMB	EL-2100TMC	EL-0922TMD	EL-2100TME
Electrical specifications					
Frequency Range -MHz	824-960 1710-1990	824-960 1710-1990	2100-2170	890-960 1710-2170	890-960 1710-2170
Notes: The frequency is not the full one. Can customize, for example GSM/CDMA/3G/4G, etc.					
VSWR	≤2.0	≤2.0	≤2.0	≤2.0	≤2.0
Gain-dBi	2.0	5/4	2.0	2/3	5/4
Polarization	Vertical	Vertical	Vertical	Vertical	Vertical
Impedance-Ω	50	50	50	50	50
Max. Power-W	50	50	50	50	50
Mechanical specifications					
Connector	SMA-J or customized	SMA-J or customized	SMA-J or customized	N-K or customized	SMA-J or customized
Dimension-mm	Φ29.5×89	Φ29.5×89	Φ30×81	Φ20×185	Φ50×15
Net Weight-g	60	92	66	120	66
Radome Material	Plastic	Plastic	Plastic	Plastic	Plastic
Operation Temperature-°C	-40~+60	-40~+60	-40~+60	-40~+60	-40~+60
Installation	Screw	Screw	Screw	Wall Mounting	Screw
Humidity-%	5~95	5~95	5~95	5~95	5~95
Description: Apply to terminal equipment and cellular wireless transmission.					
Customization: connector, cable length, gain dBm, frequency range can be customized under requirement.					

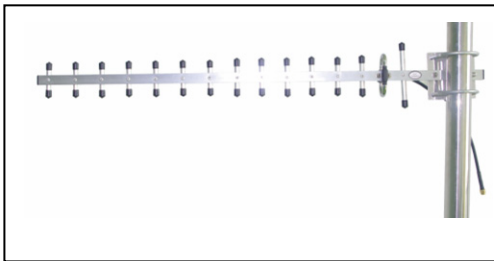
Yagi Antennas



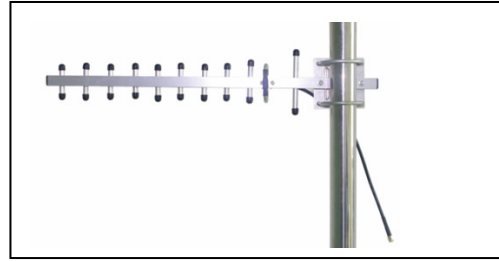
Model: EL-800YA9
Name: 800M Yagi Antenna



EL-900YA8
900M Yagi Antenna



EL-1800YA15
1800M Yagi Antenna



EL-2100YA11
2100M Yagi Antenna

Model	EL-800YA9	EL-900YA8	EL-1800YA15	EL-2100YA11
Electrical specifications				
Frequency Range -MHz	824-894	890-960	1710-1880	2100-2170
Notes: The frequency is not the full one. Can customize, for example GSM/CDMA/3G/4G, etc.				
VSWR	≤1.5	≤1.5	≤1.5	≤1.5
Gain-dBi	10	10	15	12
Polarization	Vertical	Vertical	Vertical	Vertical
Impedance-Ω	50	50	50	50
Max. Power-W	100	100	100	100
Mechanical specifications				
Connector	TNC or customized	N-K or customized	SMA or customized	SMA or customized

E-Lins Technology Co., Limited

Add: #901-902, Unit B, Jiayun Bld., Huada Rd., Dalang, Longhua, Shenzhen, 518000, China

Tel: +86-755-29230581 83700465 E-mail: sales@szelins.com www.szelins.com www.e-lins.com

Cable Length-m	0.3 or customized	0.3 or customized	0.3 or customized	0.3 or customized
Dimension-mm	890×190	795×190	710×105	650×95
Net Weight-g	380	360	332	270
Operation Temperature-°C	-40~+60	-40~+60	-40~+60	-40~+60
Installation	PoleΦ40-50	PoleΦ40-50	PoleΦ40-50	PoleΦ40-50
Description: Apply to GSM900/GSM1800 terminal equipment and GPRS wireless transmission.				
Customization: connector, cable length, gain dBm, frequency range can be customized under requirement.				

Data Transmission and Security Antennas



Model: EL-0918CPA-3
Name: GSM Patch Antenna



Model: EL-0919CPB-3
Name: GSM Patch Antenna



Model: EL-0919CPC-3
Name: GSM Patch Antenna



Model: EL-0919CPD-3
Name: GSM Patch Antenna

Model	EL-0918CPA-3	EL-0919CPB-3	EL-0919CPC-3	EL-0919CPD-3
Electrical specifications				
Frequency Range-MHz	890-960 1710-1880	890-960 1710-1990	890-960 1710-1990	890-960 1710-1990
Notes: The frequency is not the full one. Can customize, for example GSM/CDMA/3G/4G, etc.				
VSWR	≤2.0	≤2.0	≤2.0	≤2.0
Gain-dBi	2.0	2.0	2.0	2.0

Polarization	Vertical	Vertical	Vertical	Vertical
Impedance-Ω	50	50	50	50
Max. Power-W	50	50	50	50
Mechanical specifications				
Connector	SMA-J or customized	SMA-J or customized	SMA-J or customized	SMA-J or customized
Cable Length-m	3 or customized	3 or customized	3 or customized	3 or customized
Dimension-mm	99×17.5×9	106×8.6×11.5	115.5×21.5×5.5	123×21.6×6
Net Weight-g	51	20	55	58
Radome Material	Plastic	Plastic	Plastic	Plastic
Operation Temperature-℃	-40~+60	-40~+60	-40~+60	-40~+60
Installation	3M Adhesive	3M Adhesive	3M Adhesive	3M Adhesive
Description: Compact structure and nice design, patched by 3M Glues, which is applied to car security and WAMR.				
Customization: connector, cable length, gain dBm, frequency range can be customized under requirement.				

Indoor Covered And Broadband Antenna



Model: EL-0825LA
Name: 7dBi LPDA Antenna



Model: EL-0825LB
Name: 10dBi LPDA Antenna



Model: EL-0825WA
Name: Wall Mount Antenna



Model: EL-0825CD
Name: Ceiling Mount Antenna

Model	EL-0825LA	EL-0825LB	EL-0825WA	EL-0825CD
-------	-----------	-----------	-----------	-----------

Electrical specifications				
Frequency Range -MHz	806-960 1710-2500	806-960 1710-2500	806-960 1710-2500	806-960 1710-2500
Notes: The frequency is not the full one. Can customize, for example GSM/CDMA/3G/4G, etc.				
VSWR	≤1.5	≤1.5	≤1.5	≤1.5
Gain-dBi	7/9	10/11	7/10	3/5
Vertical Beam width-°	50/40	60/55	55/45	120/120
Horizontal Beam width-°	65/50	90/70	70/60	360/120
F/B Ratio-dB	≥18	≥19	----	----
Polarization	Vertical	Vertical	Vertical	Vertical
Impedance-Ω	50	50	50	50
Max. Power-W	100	100	50	50
Lightning Protection	DC Ground	DC Ground	DC Ground	DC Ground
Mechanical specifications				
Connector	N-K or customized	N-K or customized	N-K or customized	N-K or customized
Net Weight-g	723	1000	415	198
Dimension-mm	295×210×64	400×265×65	210×180×47	Φ187×86×M18
Installation -mm	Pole Φ40-50	Pole Φ40-50	Wall Mount	Ceiling Mount
Operation Temperature-°C	-40~+60	-40~+60	-40~+60	-40~+60
Description: Apply to base station, indoor coverage system and GSM/CDMA/PCS/3G/WLAN system.				
Customization: connector, cable length, gain dBm, frequency range can be customized under requirement.				

Indoor Covered And Broadband Antenna



Model: EL-0825CA EL-0825CB EL-0825CC EL-0825CE
 Name: Ceiling Antenna Ceiling Antenna Ceiling Antenna Ceiling Antenna

Model	EL-0825CA	EL-0825CB	EL-0825CC	EL-0825CE
Electrical specifications				
Frequency Range-MHz	806-960 1710-2500	806-960 1710-2500	806-960 1710-2500	806-960 1710-2500
Notes: The frequency is not the full one. Can customize, for example GSM/CDMA/3G/4G, etc.				
VSWR	≤1.5	≤1.5	≤1.5	≤1.5
Gain-dBi	3	3	3	3
Vertical Beam width-°	55	120	55	55
Horizontal Beam width -°	/	65/50	/	/
Polarization	Vertical	Vertical	Vertical	Vertical
Impedance-Ω	50	50	50	50
Max. Power-W	50	50	50	50
Lightning protection	DC Ground	DC Ground	DC Ground	DC Ground
Mechanical specifications				
Connector	N-K or customized	N-K or customized	N-K or customized	N-K or customized
Dimension-mm	Φ166×90×M18	Φ170×70×M18	Φ123×72×M18	Φ167×74×M18
Net Weight-g	205	260	198	246
Installation	Ceiling Mount	Ceiling Mount	Ceiling Mount	Ceiling Mount
Operation Temperature-°C	-40~+60	-40~+60	-40~+60	-40~+60
Description: Apply to indoor coverage system and GSM/CDMA/PCS/3G/WLAN system.				
Customization: connector, cable length, gain dBm, frequency range can be customized under requirement.				

Outdoor Decorative Antennas



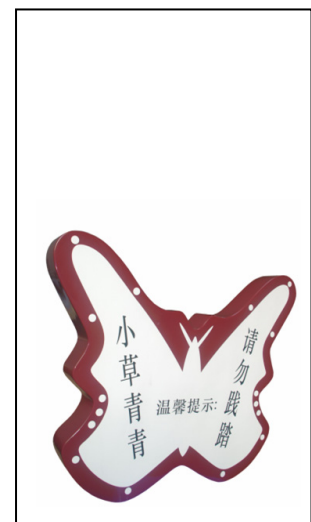
Model: EL-2400DDA10
Name: Outdoor Decorative



EL-0825DDB



EL-0825DDC



EL-0825DDD

Outdoor Decorative Antenna Outdoor Decorative Antenna Outdoor Decorative Antenna

Model	EL-2400DDA10	EL-0825DDB	EL-0825DDC	EL-0825DDD
Electrical specifications				
Frequency Range-MHz	2400-2483	824-960 1710-2500	824-960 1710-2500	806-960 1710-2500
Notes: The frequency is not the full one. Can customize, for example GSM/CDMA/3G/4G, etc.				
VSWR	≤1.5	≤1.5	≤1.5	≤1.5
Gain-dBi	10	7	3/5	7
Vertical Beam width-°	10.5	55/45	120	55/45
Horizontal Beam width -°	/	70/60	360/120	70/60
Polarization	Vertical	Vertical	Vertical	Vertical
Impedance-Ω	50	50	50	50
Max. Power-W	50	50	50	50
Lightning protection	DC Ground	DC Ground	DC Ground	DC Ground

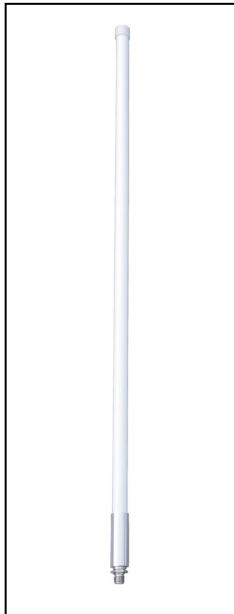
E-Lins Technology Co., Limited

Add: #901-902, Unit B, Jiayun Bld., Huada Rd., Dalang, Longhua, Shenzhen, 518000, China

Tel: +86-755-29230581 83700465 E-mail: sales@szelins.com www.szelins.com www.e-lins.com

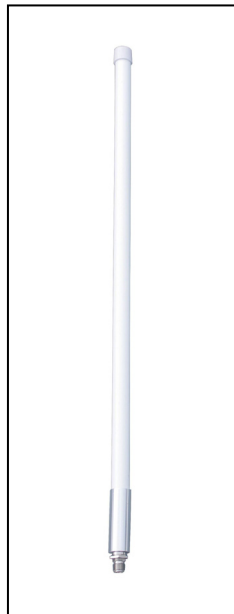
Mechanical specifications				
Connector	N-K or customized	N-K or customized	N-K or customized	N-K or customized
Dimension-mm	1320×260×260	920×530×195	Φ360×400	650×540×70
Net weight-kg	5.80	4.75	2.95	3.50
Operation Temperature-°C	-40~+60	-40~+60	-40~+60	-40~+60
Description: Apply to the signal coverage in residential area, public square and the lawn and GSM/CDMA/PCS/3G/WLAN system.				
Customization: connector, cable length, gain dBm, frequency range can be customized under requirement.				

3G Fiberglass Omni-directional Antennas (C series)



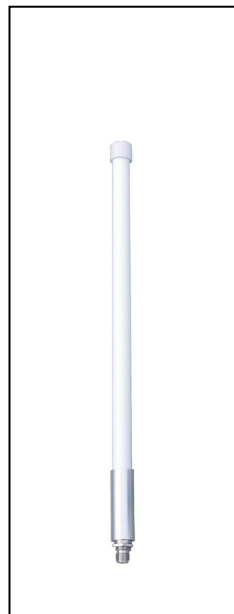
Model: EL-1921FC11

Name: 3G Fiberglass Antenna



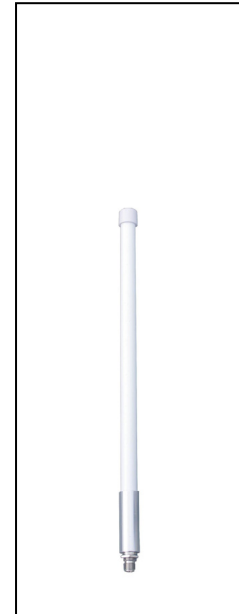
EL-1921FC10

3G Fiberglass Antenna



EL-1921FC8

3G Fiberglass Antenna



EL-1921FC6

3G Fiberglass Antenna

Model	EL-1921FC11	EL-1921FC10	EL-1921FC8	EL-1921FC6
Electrical specifications				
Frequency Range-MHz	1880~2025	1880~2025	1880~2025	1880~2025

Notes: The frequency is not the full one. Can customize, for example GSM/CDMA/3G/4G, etc.				
Gain-dBi	11	10	8	6
Polarization	Vertical	Vertical	Vertical	Vertical
VSWR	≤1.5	≤1.5	≤1.5	≤1.5
Vertical Beam width -°	9	10	16	24
Horizontal Beam width -°	360	360	360	360
Impedance-Ω	50	50	50	50
Max. Power-W	100	100	100	100
Mechanical specifications				
Connector	N-K	N-K	N-K	N-K
Dimension-mm	Φ27×1280	Φ27×1065	Φ27×850	Φ27×530
Net Weight-kg	0.8	0.68	0.56	0.40
Operation Temperature-°C	-40~+60	-40~+60	-40~+60	-40~+60
Description: Used in 3G TD-SCDMA network; good radiation, Omni-directional coverage.				
Customization: connector, cable length, gain dBm, frequency range can be customized under requirement.				

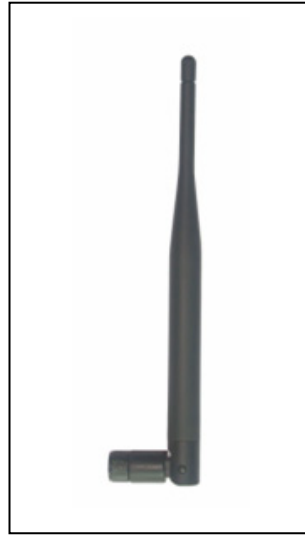
WLAN & WiFi Antennas



Model: EL-2400MSC9A-1.5	EL-2400SE-3	EL-2400SF-3	EL-2400SG-3
Name: 2.4GHz Magnetic Antenna	2.4GHz Magnetic Antenna	2.4GHz Magnetic Antenna	2.4GHz Magnetic Antenna

Model	EL-2400MSC9A-1.5	EL-2400SE-3	EL-2400SF-3	EL-2400SG-3
Electrical specifications				
Frequency Range -MHz	2400-2483	2400-2483	2400-2483	2400-2483
VSWR	≤2.0	≤2.0	≤2.0	≤2.0
Gain-dBi	9.0	9.0	9.0	7.0
Polarization	Vertical	Vertical	Vertical	Vertical
Impedance-Ω	50	50	50	50
Max. Power-W	50	50	50	50
Mechanical specifications				
Connector	RPSMA-J	RPSMA-J	RPSMA-J	RPSMA-J
Cable Length-m	1.5 or customized	3 or customized	3 or customized	3 or customized
Dimension-mm	114×69×430	Φ60×435	Φ61×420	Φ62×260
Net Weight-g	233	124	107	64
Radome Material	Plastic/ABS	Plastic/ABS	Plastic/ABS	Plastic/ABS
Operation Temperature-°C	-40~+60	-40~+60	-40~+60	-40~+60
Description: Apply to 2.4GHz WLAN/WIFI system and car mobile communication system, with hotspot covered.				
Customization: connector, cable length, gain dBm, frequency range can be customized under requirement.				

WLAN & WiFi Antennas



Model: EL-2400TFB5

Name: 2.4GHz Folded

EL-2400TFC5

2.4GHz Folded Antenna

EL-2400TFD5

2.4GHz Folded Antenna

EL-2400TFE4

2.4GHz Folded Antenna

Model	EL-2400TFB5	EL-2400TFC5	EL-2400TFD5	EL-2400TFE4
Electrical specifications				
Frequency Range -MHz	2400-2483	2400-2483	2400-2483	2400-2483
VSWR	≤2.0	≤2.0	≤2.0	≤2.0
Gain-dBi	5.0	5.0	5.0	4.0
Polarization	Vertical	Vertical	Vertical	Vertical
Impedance-Ω	50	50	50	50
Max. Power-W	50	50	50	50
Mechanical specifications				
Connector	RPSMA-J	RPSMA-J	RPSMA-J	RPSMA-J
Dimension -mm	Φ14×210	Φ13.5×186	Φ13×195	Φ8×170
Radome Material	Plastic	Plastic	Plastic	Plastic

E-Lins Technology Co., Limited

Add: #901-902, Unit B, Jiayun Bld., Huada Rd., Dalang, Longhua, Shenzhen, 518000, China

Tel: +86-755-29230581 83700465 E-mail: sales@szelins.com www.szelins.com www.e-lins.com

Net Weight-g	33	17	21	13
Operation Temperature-°C	-40~+60	-40~+60	-40~+60	-40~+60
Humidity-%	5~95	5~95	5~95	5~95
Description: Apply to 2.4GHz WLAN/WIFI system.				
Customization: connector, cable length, gain dBm, frequency range can be customized under requirement.				

WLAN & WiFi Antennas



Model: EL-2400TFF

Name: 2.4GHz Folded Antenna

EL-2400TFG5

2.4GHz Folded Antenna

EL-2400TFH

2.4GHz

Folded

EL-2400TFI7

2.4GHz Folded Antenna

Model	EL-2400TFF	EL-2400TFG5	EL-2400TFH	EL-2400TFI7
Electrical specifications				
Frequency Range -MHz	2400-2483	2400-2483	2400-2483	2400-2483
VSWR	≤2.0	≤2.0	≤2.0	≤2.0
Gain-dBi	2.5	4.0	3.0	7.0
Polarization	Vertical	Vertical	Vertical	Vertical

E-Lins Technology Co., Limited

Add: #901-902, Unit B, Jiayun Bld., Huada Rd., Dalang, Longhua, Shenzhen, 518000, China

Tel: +86-755-29230581 83700465 E-mail: sales@szelins.com www.szelins.com www.e-lins.com

Impedance-Ω	50	50	50	50
Max. Power-W	50	50	50	50
Mechanical specifications				
Connector	RPSMA-J	RPSMA-J	RPSMA-J	RPSMA-J
Dimension -mm	Φ10×110	Φ13×155	12.7×9.8×153	Φ13×255
Net Weight-g	8.5	18	14	30
Radome Material	Plastic	Plastic	Plastic	Plastic
Operation Temperature-°C	-40~+60	-40~+60	-40~+60	-40~+60
Description: Apply to 2.4GHz WLAN/WIFI system.				
Customization: connector, cable length, gain dBm, frequency range can be customized under requirement.				

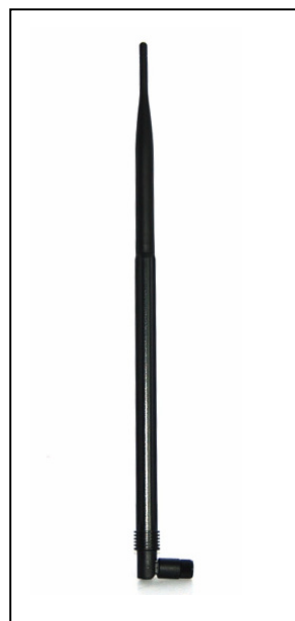
WLAN & WiFi Antennas



Model: EL-2400TFJ7
Name: 2.4GHz Folded Antenna



EL-2400TFA9
2.4GHz Folded Antenna



EL-2400TFK10
2.4GHz Folded Antenna



EL-2400TFL9
2.4GHz Folded Antenna

Model	EL-2400TFJ7	EL-2400TFA9	EL-2400TFK10	EL-2400TFL9
Electrical specifications				

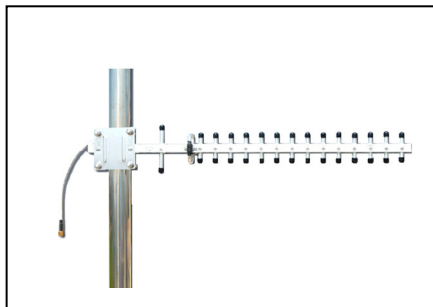
Frequency Range -MHz	2400-2483	2400-2483	2400-2483	2400-2483
VSWR	≤2.0	≤2.0	≤2.0	≤2.0
Gain-dBi	7.0	9.0	10.0	9.0
Polarization	Vertical	Vertical	Vertical	Vertical
Impedance-Ω	50	50	50	50
Max. Power-W	50	50	50	50
Mechanical specifications				
Connector	RPSMA-J	RPSMA-J	RPSMA-J	RPSMA-J
Dimension -mm	Φ13.5×275	Φ13.5×375	Φ13.5×395	Φ13.5×390
Net Weight-g	32	50	48	45
Radome Material	Plastic	Plastic	Plastic	Plastic
Operation Temperature-℃	-40~+60	-40~+60	-40~+60	-40~+60
Humidity-%	5~95	5~95	5~95	5~95
Description: Apply to 2.4GHz WLAN/WIFI system.				
Customization: connector, cable length, gain dBm, frequency range can be customized under requirement.				

WLAN & WiFi Antennas



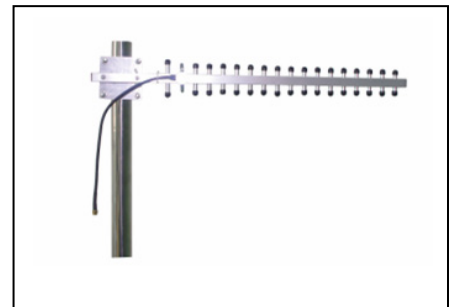
Model: EL-2400YB15

Name: 2.4GHz Yagi Antenna



EL-2400YA16

2.4GHz Yagi Antenna



EL-2400YA18

2.4GHz Yagi Antenna

Model	EL-2400YB15	EL-2400YA16	EL-2400YA18
Electrical specifications			
Frequency Range -MHz	2400-2483	2400-2483	2400-2483

E-Lins Technology Co., Limited

Add: #901-902, Unit B, Jiayun Bld., Huada Rd., Dalang, Longhua, Shenzhen, 518000, China

Tel: +86-755-29230581 83700465 E-mail: sales@szelins.com www.szelins.com www.e-lins.com

VSWR	≤2.0	≤2.0	≤2.0
Gain-dBi	15	16	18
Vertical Beam width-°	17	24	24
Horizontal Beam width -°	11	26	26
Front-to-Back Ratio -dB	≥25	≥30	≥32
Polarization	Vertical	Vertical	Vertical
Impedance-Ω	50	50	50
Max. Power-W	50	50	50
Lightning protection	DC Ground	DC Ground	DC Ground
Mechanical specifications			
Connector	RPSMA-J	RPSMA-J	RPSMA-J
Dimension-mm	Φ51×465	610×90	580×70
Net Weight-g	415	270	308
Pole Installation -mm	Φ40~50	Φ40~50	Φ40~50
Description: Apply to 2.4G WLAN system and 2.4G ISM frequency with wireless bridge.			
Customization: connector, cable length, gain dBm, frequency range can be customized under requirement.			

2.3~2.7GHz Wall Antennas



Model: EL-2327WE10
Name: 2.3-2.7GHz Wall Antenna



EL-2327WA12
2.3-2.7GHz Wall Antenna



EL-2327WA12A
2.3-2.7GHz Wall Antenna

Model	EL-2327WE10	EL-2327WA12	EL-2327WA12A
Electrical specifications			
Frequency range -MHz	2300~2700	2300~2700	2300~2700
Gain-dBi	10	12	12
Polarization	Vertical	Vertical	Vertical
VSWR	≤1.5	≤1.5	≤1.5
Horizontal Beam width -°	50	54	54
Vertical Beam width -°	45	32	32
Front-to-Back Ratio -dB	≥15	≥23	≥23
Impedance-Ω	50	50	50
Max. Power-W	50	50	50
Mechanical specifications			
Connector	SMA-J	N-K	SMA-J
Dimension-mm	140×120×38	210×180×45	210×180×45
Net Weight-g	0.35	0.5	0.4
Operation Temperature-°C	-40~+60	-40~+60	-40~+60
Description: Apply to 2.3~2.7GHz frequency WLAN /Wi-Fi system /ISM frequency, support IEEE802.11a/b/g/n; to wireless point-to-point wireless digital image transmission, public hotspot.			
Customization: connector, cable length, gain dBm, frequency range can be customized under requirement.			

2.4GHz Panel Antennas



Model: EL-2400D90C14
Name: 2.4GHz Panel



EL-2400V90C14
2.4GHz Panel Antenna



EL-2400V120C13
2.4GHz Panel Antenna

Model	EL-2400D90C14	EL-2400V90C14	EL-2400V120C13
Electrical specifications			
Frequency range -MHz	2400~2500	2400~2500	2400~2500
Gain-dBi	14×2	14	13
Polarization	±45°	Vertical	Vertical
VSWR	≤1.5	≤1.5	≤1.5
Horizontal Beam width -°	90	90	120
Vertical Beam width -°	15	15	15
Front-to-Back Ratio -dBi	≥25	≥25	≥23
Impedance-Ω	50	50	50
Max. Power-W	200	200	200
Mechanical specifications			
Connector	N-K	N-K	N-K
Dimension-mm	490×132×62	490×132×62	490×132×62

E-Lins Technology Co., Limited

Add: #901-902, Unit B, Jiayun Bld., Huada Rd., Dalang, Longhua, Shenzhen, 518000, China

Tel: +86-755-29230581 83700465 E-mail: sales@szelins.com www.szelins.com www.e-lins.com

Net Weight-g	1.6	1.4	1.4
Operation Temperature-°C	-40~+60	-40~+60	-40~+60
Description: Apply in 2.4GHz frequency WLAN /Wi-Fi system /ISM frequency, support IEEE802.11a/b/g/n; sector coverage, long-distance point-to-point and point-to-multipoint wireless bridge .			
Customization: connector, cable length, gain dBm, frequency range can be customized under requirement.			

2.4GHz Flat Panel Antennas



Model: EL-2400PG12

EL-2400PB14

EL-2400PF18

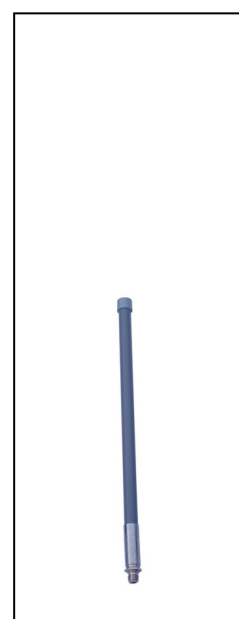
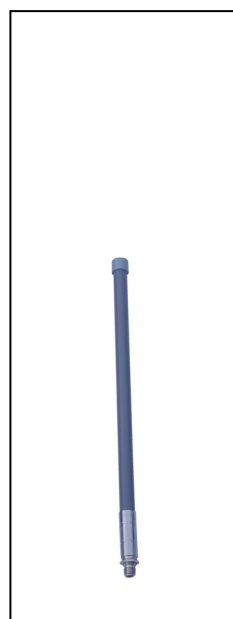
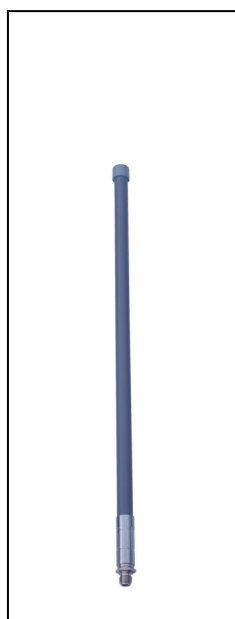
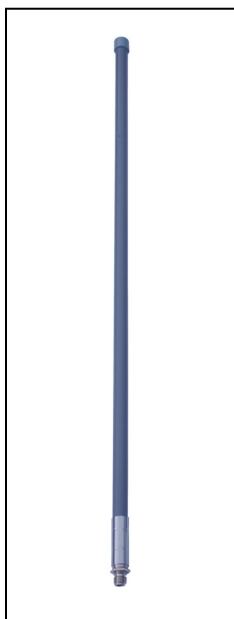
EL-2400EPF18

Name: 2.4GHz Flat Panel Antenna 2.4GHz Flat Panel Antenna 2.4GHz Flat Panel Antenna 2.4GHz Flat Panel Antenna

Model	EL-2400PG12	EL-2400PB14	EL-2400PF18	EL-2400EPF18
Electrical specifications				
Frequency range-MHz	2400~2483	2400~2483	2400~2483	2400~2483
Gain-dBi	12	14	18	18
Polarization	Vertical	Vertical	Vertical	Vertical
VSWR	≤1.5	≤1.5	≤1.5	≤1.5

Vertical Beam width-°	54	32	20	20
Horizontal Beam width -°	32	30	20	20
Front-to-Back Ratio -dB	≥25	≥25	≥25	≥25
Impedance-Ω	50	50	50	50
Max. Power-W	50	50	50	50
Mechanical specifications				
Connector	N-K	N-K	N-K	N-K
Dimension-mm	190×190×30	234×194×35	305×305×25	305×305×85
Net Weight-g	0.55	0.75	1.4	2.6
Operation Temperature-°C	-40~+60	-40~+60	-40~+60	-40~+60
Description: For 2.4GHz frequency WLAN /Wi-Fi system /ISM frequency, support IEEE802.11a/b/g/n; Wide range of applications, to wireless digital image transmission, public hotspot, point-to-point and point-to-multipoint wireless bridge.				
Customization: connector, cable length, gain dBm, frequency range can be customized under requirement.				

2.4GHz Fiberglass Omni-directional Antennas (A series)



Model: EL-2400FA12

EL-2400FA10

EL-2400FA8

EL-2400FA6

Name: 2.4GHz Fiberglass Antenna 2.4GHz Fiberglass Antenna 2.4GHz Fiberglass Antenna 2.4GHz Fiberglass Antenna

Add: #901-902, Unit B, Jiayun Bld., Huada Rd., Dalang, Longhua, Shenzhen, 518000, China

Tel: +86-755-29230581 83700465 E-mail: sales@szelins.com www.szelins.com www.e-lins.com

Model	EL-2400FA12	EL-2400FA10	EL-2400FA8	EL-2400FA6
Electrical specifications				
Frequencyrange-MHz	2400~2483	2400~2483	2400~2483	2400~2483
Gain-dBi	12	10	8	6
Polarization	Vertical	Vertical	Vertical	Vertical
VSWR	≤1.5	≤1.5	≤1.5	≤1.5
Vertical Beam width-°	7	10	16	25
Horizontal Beam width -°	360	360	360	360
Impedance-Ω	50	50	50	50
Max. Power-W	100	100	100	100
Mechanical specifications				
Connector	N-K	N-K	N-K	N-K
Dimension-mm	Φ21×1200	Φ21×1000	Φ21×550	Φ21×400
Net Weight-kg	1.2	1.0	0.5	0.4
Operation Temperature-°C	-40~+60	-40~+60	-40~+60	-40~+60
Description: For 2.4GHz frequency WLAN /Wi-Fi system /ISM frequency, support IEEE802.11a/b/g/n; Wide range of applications, to wireless digital image transmission, public hotspot, point-to-point and point-to-multipoint wireless bridge.				
Customization: connector, cable length, gain dBm, frequency range can be customized under requirement.				

2.4GHz Grid Parabolic Antennas



E-Lins Technology Co., Limited

Add: #901-902, Unit B, Jiayun Bld., Huada Rd., Dalang, Longhua, Shenzhen, 518000, China

Tel: +86-755-29230581 83700465 E-mail: sales@szelins.com www.szelins.com www.e-lins.com

Model: EL-2400GP19

EL-2400GP24

EL-2400GP27

Name: 2.4GHz Grid Parabolic Antenna

2.4GHz Grid Parabolic Antenna

2.4GHz Grid Parabolic Antenna

Model	EL-2400GP19	EL-2400GP24	EL-2400GP27
Electrical specifications			
Frequency Range -MHz	2400~2483	2400~2483	2400~2483
Gain-dBi	19	24	27
Polarization	Vertical or horizontal	Vertical or horizontal	Vertical or horizontal
VSWR	≤1.5	≤1.5	≤1.5
Horizontal Beam width -°	12	10	6.5
Vertical Beam width -°	16	14	6.5
Front-to-Back Ratio -dBi	≥20	≥25	≥32
Impedance-Ω	50	50	50
Max. Power-W	100	100	100
Mechanical specifications			
Connector	N -K	N -K	N -K
Dimension-mm	600×400	900×600	Φ1200
Net Weight-kg	2.4	3.7	20
Operation Temperature-°C	-40~+60	-40~+60	-40~+60
Description: For 2.4GHz frequency WLAN /Wi-Fi system /ISM frequency, support IEEE802.11a/b/g/n; High gain, good effect, to wireless digital image transmission, point-to-point wireless bridge.			
Customization: connector, cable length, gain dBm, frequency range can be customized under requirement.			

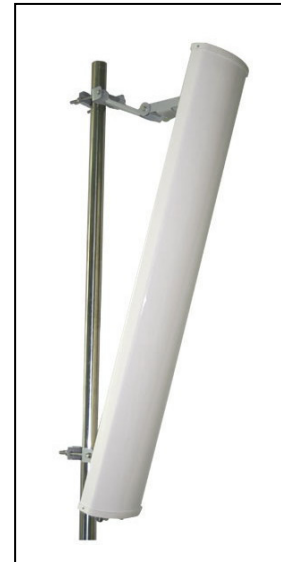
3.5GHz Panel Antennas



Model: EL-3338D90C17
Name: 3.5GHz Panel Antenna



EL-3338V90C17
3.5GHz Panel Antenna



EL-3338V120C16
3.5GHz Panel Antenna

Model	EL-3338D90C17	EL-3338V90C17	EL-3338V120C16
Electrical specifications			
Frequency Range -MHz	3300~3800	3300~3800	3300~3800
Gain-dBi	17×2	17	16
Polarization	±45°	Vertical	Vertical
VSWR	≤1.5	≤1.5	≤1.5
Vertical Beam width -°	7	7	7
Horizontal Beam width -°	90	90	120
Front-to-Back Ratio -dBi	≥28	≥28	≥25
Impedance-Ω	50	50	50
Max. Power-W	200	200	200
Mechanical specifications			
Connector	N-K	N-K	N-K

E-Lins Technology Co., Limited

Add: #901-902, Unit B, Jiayun Bld., Huada Rd., Dalang, Longhua, Shenzhen, 518000, China

Tel: +86-755-29230581 83700465 E-mail: sales@szelins.com www.szelins.com www.e-lins.com

Dimension-mm	800×128×56	800×128×56	800×128×56
Net Weight-kg	2.8	2.6	2.6
Operation Temperature-℃	-40~+60	-40~+60	-40~+60
Description: 3.5GHz WiMAX system; high gain, sector coverage, applicable to wireless access systems, multipoint wireless bridge.			
Customization: connector, cable length, gain dBm, frequency range can be customized under requirement.			

3.5GHz Flat Panel Antennas



Model: EL-3338PG15

EL-3338PB16

EL-3338PD18

EL-3500EPF18

Name: 3.5GHz Flat Panel Antenna

3.5GHz Flat Panel Antenna

3.5GHz Flat Panel Antenna

3.5GHz Flat Panel Antenna

Model	EL-3338PG15	EL-3338PB16	EL-3338PD18	EL-3500EPF18
Electrical specifications				
Frequency Range -MHz	3300~3800	3300~3800	3300~3800	3400~3600
Gain-dBi	15	16	18	18
Polarization	Vertical or horizontal	Vertical or horizontal	Vertical or horizontal	Vertical or horizontal
VSWR	≤1.5	≤1.5	≤1.5	≤1.5
Vertical Beam width -°	30	30	17	17
Horizontal Beam width -°	30	24	17	17

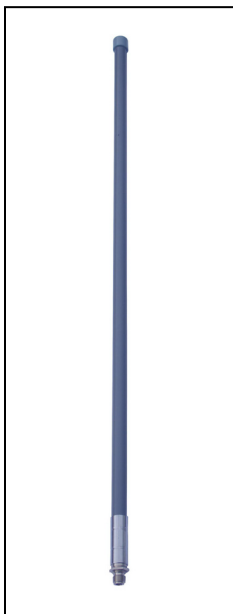
E-Lins Technology Co., Limited

Add: #901-902, Unit B, Jiayun Bld., Huada Rd., Dalang, Longhua, Shenzhen, 518000, China

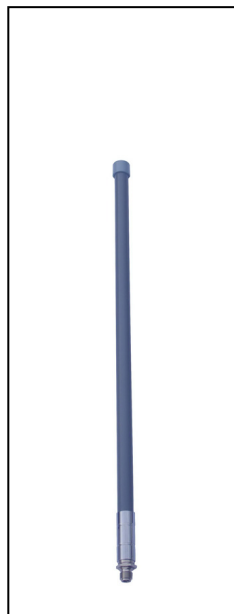
Tel: +86-755-29230581 83700465 E-mail: sales@szelins.com www.szelins.com www.e-lins.com

Front-to-Back Ratio -dBi	≥25	≥25	≥25	≥25
Impedance-Ω	50	50	50	50
Max. Power-W	50	50	50	50
Mechanical specifications				
Connector	N-K	N-K	N-K	N-K
Dimension-mm	190×190×30	234×194×35	261×261×35	305×305×85
Net Weight-kg	0.55	0.75	1.4	2.5
Operation Temperature-℃	-40~+60	-40~+60	-40~+60	-40~+60
Description: For 3.5GHz WiMax, system; small size, low profile, for small area coverage, applicable to wireless access systems, point-to-point and point-to-multipoint wireless bridge.				
Customization: connector, cable length, gain dBm, frequency range can be customized under requirement.				

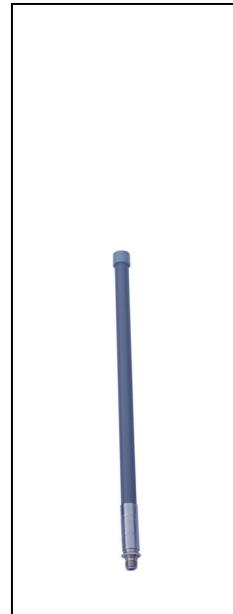
3.5GHz Fiberglass Omni-directional Antennas



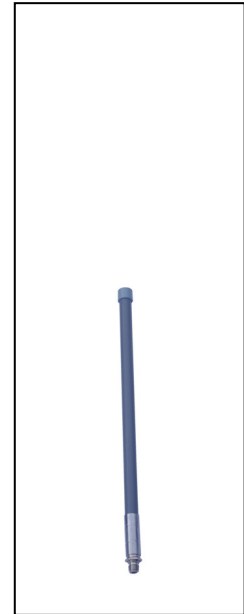
Model: EL-3500FA12



EL-3500FA10



EL-3500FA8



EL-3500FA6

Name: 3.5GHz Fiberglass Antenna 3.5GHz Fiberglass Antenna 3.5GHz Fiberglass Antenna 3.5GHz Fiberglass Antenna

Model	EL-3500FA12	EL-3500FA10	EL-3500FA8	EL-3500FA6
Electrical specifications				
Frequency Range -MHz	3400~3600	3500~3600	3400~3600	3400~3600
Gain-dBi	12	10	8	6
Polarization	Vertical	Vertical	Vertical	Vertical
VSWR	≤1.5	≤1.5	≤1.5	≤1.5
Vertical Beam width -°	7	10	16	24
Horizontal Beam width -°	360	360	360	360
Impedance-Ω	50	50	50	50
Max. Power-W	100	100	100	100
Mechanical specifications				
Connector	N-K	N-K	N-K	N-K
Dimension-mm	Φ21×900	Φ21×600	Φ21×500	Φ21×300
Net Weight-kg	0.86	0.68	0.45	0.35
Operation Temperature-°C	-40~+60	-40~+60	-40~+60	-40~+60
Description: 3.5GHz WiMAX systems; radiation effects, wide range of Omni-directional Coverage, Wireless access systems, point-to-multipoint wireless bridge.				
Customization: connector, cable length, gain dBm, frequency range can be customized under requirement.				

3.5GHz Parabolic Antennas



E-Lins Technology Co., Limited

Add: #901-902, Unit B, Jiayun Bld., Huada Rd., Dalang, Longhua, Shenzhen, 518000, China

Tel: +86-755-29230581 83700465 E-mail: sales@szelins.com www.szelins.com www.e-lins.com

Model: EL-3338GP19	EL-3338GP22	EL-3338GP25	EL-3338GP28
Name: 3.5GHz Parabolic Antenna	3.5GHz Parabolic Antenna	3.5GHz Parabolic Antenna	3.5GHz Parabolic Antenna

Model	EL-3338GP19	EL-3338GP22	EL-3338P25	EL-3338P28
Electrical specifications				
Frequency Range -MHz	3300~3800	3300~3800	3300~3800	3300~3800
Gain-dBi	19	22	25	28
Polarization	Vertical or horizontal	Vertical or horizontal	Vertical or horizontal	Vertical or horizontal
VSWR	≤1.5	≤1.5	≤1.5	≤1.5
Vertical Beam width -°	16	13	10	7.5
Horizontal Beam width -°	12	9	10	7.5
Front-to-Back Ratio -dBi	≥20	≥25	≥32	≥35
Impedance-Ω	50	50	50	50
Max. Power-W	100	100	100	100
Mechanical specifications				
Connector	N-K	N-K	N-K	N-K
Dimension-mm	400×300	600×400	Φ600	Φ900
Net Weight-kg	1.4	2.4	5	10
Operation Temperature-°C	-40~+60	-40~+60	-40~+60	-40~+60
Description: For 3.5GHz WiMAX system; high gain, good effect, applicable to wireless access systems, long-distance point-to-point wireless bridge.				
Customization: connector, cable length, gain dBm, frequency range can be customized under requirement.				

5.8GHz Panel Antennas



Model: EL-5800D90D16
Name: 5.8GHz Panel Antenna



EL-5800V90C17
5.8GHz Panel Antenna



EL-5800V120C15
5.8GHz Panel Antenna

Model	EL-5800D90D16	EL-5800V90C17	EL-5800V120C15
Electrical specifications			
Frequency Range -MHz	5725~5850	5725~5850	5725~5850
Gain-dBi	16×2	17	15
Polarization	±45°	Vertical	Vertical
VSWR	≤1.5	≤1.5	≤1.5
Horizontal Beam width -°	90	90	120
Vertical Beam width -°	8	7	7
Front-to-Back Ratio -dBi	≥25	≥25	≥23
Impedance-Ω	50	50	50
Max. Power-W	100	100	100
Mechanical specifications			
Connector	N-K	N-K	N-K

E-Lins Technology Co., Limited

Add: #901-902, Unit B, Jiayun Bld., Huada Rd., Dalang, Longhua, Shenzhen, 518000, China

Tel: +86-755-29230581 83700465 E-mail: sales@szelins.com www.szelins.com www.e-lins.com

Dimension-mm	450×168×88	450×132×62	450×132×62
Net Weight-kg	2.0	1.2	1.4
Operation Temperature-°C	-40~+60	-40~+60	-40~+60
Description: For 5GHz frequency ,WLAN /Wi-Fi system, support IEEE802.11a; sector coverage, applicable to wireless access systems, multipoint wireless bridge.			
Customization: connector, cable length, gain dBm, frequency range can be customized under requirement.			

5.1~5.8GHz Flat Panel Antennas



Model: EL-5158PG18
Name: 5.1-5.8GHz Antenna



EL-5158PB15V90
5.1-5.8GHz Antenna



EL-5158PD18×2
5.1-5.8GHz Antenna

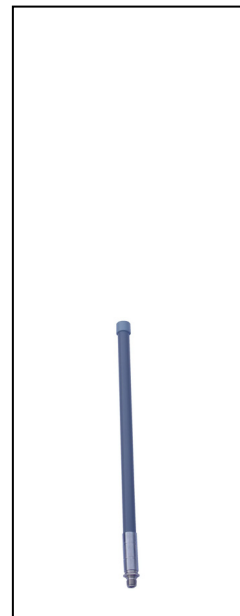
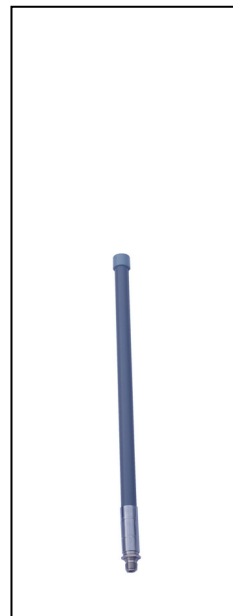
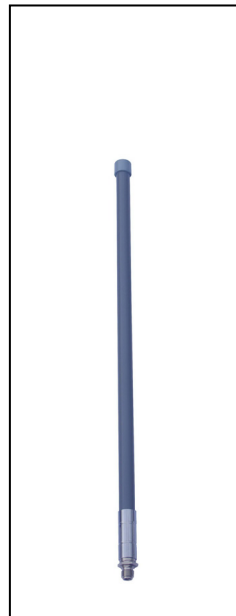
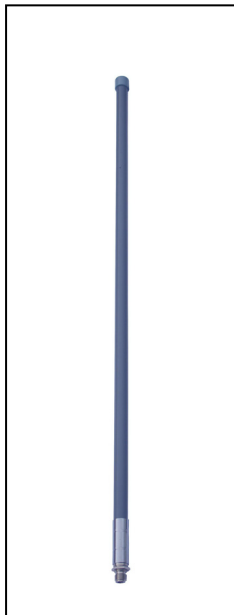


EL-5158EPF23
5.1-5.8GHz Antenna

Model	EL-5158PG18	EL-5158PB15V90	EL-5158PD18×2	EL-5158EPF23
Electrical specifications				
Frequency Range -MHz	5150~5850	5150~5850	5150~5850	5150~5850
Gain-dBi	18	15	18×2	23
Polarization	Vertical or horizontal	Vertical	Vertical or horizontal	Vertical or horizontal
VSWR	≤1.5	≤1.5	≤1.5	≤1.5
Vertical Beam width -°	20	14	17	11
Horizontal Beam width -°	20	90	17	11

Front-to-Back Ratio -dBi	≥25	≥25	≥25	≥25
Impedance-Ω	50	50	50	50
Max. Power-W	50	50	50	50
Mechanical specifications				
Connector	N-K	N-K	N-K	N-K
Dimension-mm	190×190×30	235×195×35	260×260×35	305×305×85
Net Weight-kg	0.55	0.75	1.4	2.5
Operation Temperature-℃	-40~+60	-40~+60	-40~+60	-40~+60
Description: For 5GHz frequency WLAN /Wi-Fi system, support IEEE802.11a; Wide range of applications, applicable to public hot spot coverage, wireless digital image transmission, point-to-point and point-to-multipoint wireless bridge.				
Customization: connector, cable length, gain dBm, frequency range can be customized under requirement.				

5.8GHz Fiberglass Omni-directional Antennas



Model: EL-5800FA12

EL-5800FA10

EL-5800FA8

EL-5800FA6

Name: 5.8GHz Fiberglass Antenna 5.8GHz Fiberglass Antenna 5.8GHz Fiberglass Antenna 5.8GHz Fiberglass Antenna

Model	EL-5800FA12	EL-5800FA10	EL-5800FA8	EL-5800FA6
-------	-------------	-------------	------------	------------

Electrical specifications				
Frequency Range -MHz	5725~5850	5725~5850	5725~5850	5725~5850
Gain-dBi	12	10	8	6
Polarization	Vertical	Vertical	Vertical	Vertical
VSWR	≤1.5	≤1.5	≤1.5	≤1.5
Vertical Beam width -°	7	10	16	25
Horizontal Beam width -°	360	360	360	360
Impedance-Ω	50	50	50	50
Max. Power-W	50	50	50	50
Mechanical specifications				
Connector	N-K	N-K	N-K	N-K
Dimension-mm	Φ21×550	Φ21×430	Φ21×330	Φ21×260
Net Weight-kg	0.55	0.35	0.20	0.18
Operation Temperature-°C	-40~+60	-40~+60	-40~+60	-40~+60
Description: For 5GHz frequency WLAN /Wi-Fi system, support IEEE802.11a; Wide range of applications, applicable to public hot spot coverage, wireless digital image transmission, point-to-point and point-to-multipoint wireless bridge.				
Customization: connector, cable length, gain dBm, frequency range can be customized under requirement.				

5.8GHz Grid Parabolic Antennas



E-Lins Technology Co., Limited

Add: #901-902, Unit B, Jiayun Bld., Huada Rd., Dalang, Longhua, Shenzhen, 518000, China
Tel: +86-755-29230581 83700465 E-mail: sales@szelins.com www.szelins.com www.e-lins.com

Model: EL-5800GP24

EL-5800GP27

EL-5800GP30

Name: 5.8GHz Grid Parabolic Antenna

5.8GHz Grid Parabolic Antenna

5.8GHz Grid Parabolic Antenna

Model	EL-5800GP24	EL-5800GP27	EL-5800GP30
Electrical specifications			
Frequency Range -MHz	5725~5850	5725~5850	5725~5850
Gain-dBi	24	27	30
Polarization	Vertical or horizontal	Vertical or horizontal	Vertical or horizontal
Horizontal Beam width -°	9	6	4
Vertical Beam width -°	12	9	6
VSWR	≤1.5	≤1.5	≤1.5
Front-to-Back Ratio -dBi	≥20	≥25	≥32
Impedance-Ω	50	50	50
Max. Power-W	100	100	100
Mechanical specifications			
Connector	N-K	N-K	N-K
Dimension-mm	400×300	600×400	900×600
Net Weight-kg	1.4	2.4	4.6
Operation Temperature-°C	-40~+60	-40~+60	-40~+60
Description: For 5GHz frequency WLAN /Wi-Fi system, support IEEE802.11a; high gain, good effect, Applies to wireless digital image transmission, point-to-point wireless bridge.			
Customization: connector, cable length, gain dBm, frequency range can be customized under requirement.			

5.8GHz Parabolic Antennas



Model: EL-5800P29
Name: 5.8GHz Parabolic Antenna



Model: EL-5800P32
Name: 5.8GHz Parabolic Antenna

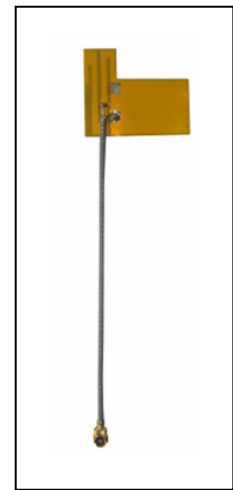
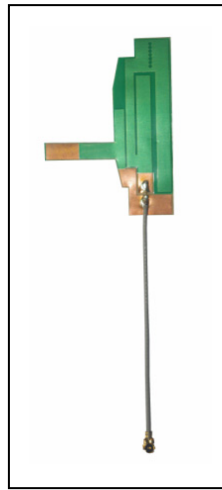


Model: EL-5800P34
Name: 5.8GHz Parabolic Antenna

Model	EL-5800P29	EL-5800P32	EL-5800P34
Electrical specifications			
Frequency Range -MHz	5725~5850	5725~5850	5725~5850
Gain-dBi	29	32	34
Polarization	Vertical or horizontal	Vertical or horizontal	Vertical or horizontal
VSWR	≤1.5	≤1.5	≤1.5
Horizontal Beam width -°	6	4	3
Vertical Beam width -°	6	4	3
Front-to-Back Ratio -dBi	≥20	≥25	≥32
Impedance-Ω	50	50	50
Max. Power-W	100	100	100
Mechanical specifications			

Connector	N-K	N-K	N-K
Dimension-mm	Φ600	Φ900	Φ1250
Net Weight-kg	5	10	24.5
Operation Temperature-℃	-40~+60	-40~+60	-40~+60
Description: For 5GHz frequency WLAN /Wi-Fi system, support IEEE802.11a; high gain, good effect, Applies to wireless digital image transmission, point-to-point wireless bridge.			
Customization: connector, cable length, gain dBm, frequency range can be customized under requirement.			

Internal Antenna Series



Model: EL-0819ITF1
Name: GSM Antenna

EL-0918ITF2
GSM Antenna

EL-0819ITF3
GSM Antenna

EL-2400ITF4
WIFI Antenna

EL-2400ITF5
WIFI Antenna

Model	EL-0819ITF1	EL-0918ITF2	EL-0819ITF3	EL-2400ITF4	EL-2400ITF5
Electrical specifications					
Frequency Range -MHz	850/900 1800/1900	900/1800	850/900 1800/1900	2400-2483	2400-2483
VSWR	≤2.5	≤2.5	≤2.5	≤2.0	≤2.0
Gain-dBi	2.0	2.0	2.0	2.0	2.0
Polarization	Vertical	Vertical	Vertical	Vertical	Vertical

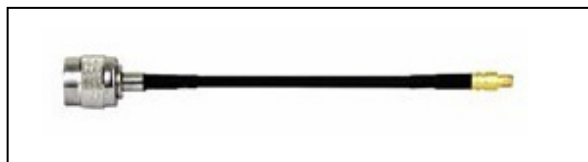
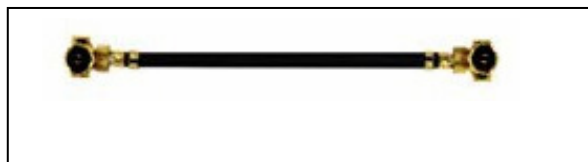
E-Lins Technology Co., Limited

Add: #901-902, Unit B, Jiayun Bld., Huada Rd., Dalang, Longhua, Shenzhen, 518000, China

Tel: +86-755-29230581 83700465 E-mail: sales@szelins.com www.szelins.com www.e-lins.com

Impedance-Ω	50	50	50	50	50
Max. Power-W	20	20	20	20	20
Mechanical specifications					
Connector	IPEX	IPEX	IPEX	IPEX	IPEX
Dimension-mm	50×10×0.6	40×5.5×0.6	46.5×33.5×0.2	26×6.5×0.6	18.3×22×0.2
Cable-mm	60 or customized	60 or customized	60 or customize	60 or customize	60 or customize
Material	FR4	FR4	FPC	FR4	FPC
Installation	3M Adhesive	3M Adhesive	3M Adhesive	3M Adhesive	3M Adhesive
Operation Temperature-°C	-40~+60	-40~+60	-40~+60	-40~+60	-40~+60
Humidity-%	5~95	5~95	5~95	5~95	5~95
Description: used in GSM/GPRS/2.4GHz WLAN / WIFI system, the user terminal.					
Customization: connector, cable length, gain dBm, frequency range can be customized under requirement.					

Connecting Line Series



E-Lins Technology Co., Limited

Add: #901-902, Unit B, Jiayun Bld., Huada Rd., Dalang, Longhua, Shenzhen, 518000, China

Tel: +86-755-29230581 83700465 E-mail: sales@szelins.com www.szelins.com www.e-lins.com

Electrical Specifications					Mechanical Specifications		
Model	Frequency Range -MHz	VSWR	Loss-db	Impedance-Ω	Connector	Cable	Length-mm
SMB-MCX-60	DC-3000	≤1.3	≤0.2	50	SMB-MCX	RG174	60 or customized
IPEX-IPEX-60	DC-3000	≤1.3	≤0.2	50	IPEX-IPEX	1.13	60 or customized
TNC-MCX-60	DC-3000	≤1.3	≤0.2	50	TNC-MCX	RG174	60 or customized
CRC9-FME-60	DC-3000	≤1.3	≤0.2	50	CRC9-FME	RG316	60 or customized
SMA-IPEX-100	DC-3000	≤1.3	≤0.2	50	SMA-IPEX	1.13	100 or customized
Fakra-SMA-100	DC-3000	≤1.3	≤0.2	50	Fakra-SMA	RG178	100 or customized
BNC-MCX-100	DC-3000	≤1.3	≤0.2	50	BNC-MCX	RG178	100 or customized
NJ-NK-300	DC-3000	≤1.3	≤0.2	50	NJ-NK	3D-FB	300 or customized

Description: The connection between the RF port or module to the antenna used in a variety of devices.

Notes: Please tell us details if the catalog does not list the band / frequencies. Band and frequencies can be customized. The listed one is just for reference.